



SEA HORSE MIDDLE EAST MARINE SERVICES LLC.

Offshore Contractors/Oil Field Marine Logistics

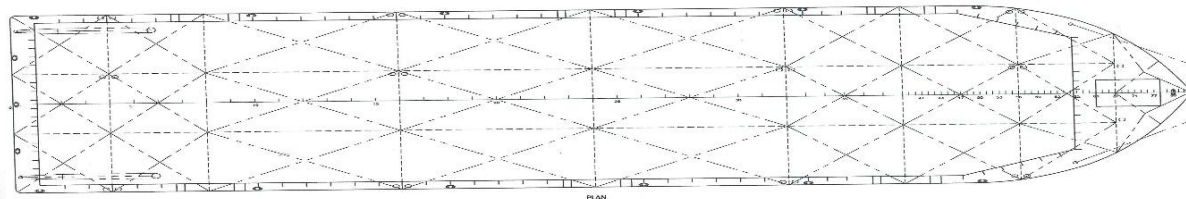
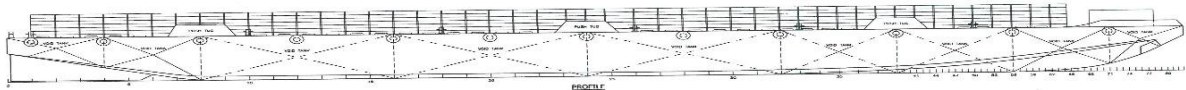
Room 8-1 5th Floor Prestige Tower 17-Mohd. Bin Zayed City, Musaffah, Abu Dhabi, UAE

Tel. No. 02 441 7144 Fax No. 02 441 7195 Website: www.shmemarine.com

SH HOPE



PRINCIPAL PARTICULARS		CARGO	
TYPE OF SHIP	: Steel Dumb Barge	SIDE WALL	: YES
FLAG	: ST. Vincent and the Grenadines	DECK LOADING	: YES
OFFICIAL NUMBER	: 12497	RAMP	: NIL
CLASSIFICATION	: Korean Register Shipping	DECK REINFORCEMENT	: NIL
YEAR BUILT	: 2006		
PLACE BUILT	: China		
LENGTH OVERALL	: 111.252 Mtrs (365 ft)	TOWING EQUIPMENT	
REGISTERED LENGTH	: 106.80 Mtrs	ANCHOR WINCH	: Hydraulic operated engine driven, SWL 5T
BREADTH	: 28.042 Mtrs	MOORING BOLLARDS	: 16 X single cross Bitt Bollard
DEPTH	: 6.93 Mtrs	TOWING BRACKETS	: 2 x Fore smit bracket, 2 x Aft smit bracket
DESIGNED DRAFT	: 5.433 Mtrs	BRIDLE WIRE	: 6 X 36 48mm, 15.0 M ,129 T MBL
GRT / NRT	: 5248 Ton /1574 Ton	SHACKLES	: 4 X 2½ in, 35.T, 5 x 2.5in ,55.0 TBow/Bolt & Nut
DWT / Light Ship	: 12527.98 T / 2078.32 T	EMERGENCY TOW LINE	: 100phi, PP Rope, 100M w/ Polyform Buoy
STEEL SCANTLINGS		FIRE FIGHTING / LIFE SAVING APPLIANCES	
DECK STRENGTH	: 10 T/m2	LIFE RING	: NIL
TRANSVERSE BULKHEAD	: 8	FIRE EXTINGUISHER	: NIL
NO OF COMPARTMENTS	: 26	NAVIGATION LIGHTS	: Solar Type
LONGITUDINAL BULKHEAD	: 2		



**General
Arrangement**

Particulars herein to be amended, not guaranteed as to accuracy and -reliability unless otherwise stated by inspection of the vessel.